

have essentially the same slope is evidence that *we are primarily observing a ring current effect which is a function of the HOMO-LUMO energy gap*. The phenyl and naphthyl groups in **2d**, **2h**, **2i**, and **2k** lower the LUMO relative to the parent anion (**2a**) due to their higher density of  $\pi$  energy levels. These results, when coupled with the uv spectral data (which give an independent measure of the trend in the HOMO-LUMO energy difference), give strong support to the theoretical interpretation of paramagnetic ring currents.<sup>1</sup>

Finally, it is interesting to note that the chemical shifts of  $H_1$  and  $H_9$  in **2b-f** do not correlate as well with  $\sigma_p$  as do those of the other protons. This can be explained by a greater degree of coplanarity of the 9-aryl ring with the eight-membered ring in the case of donor substituents due to greater  $\pi$ -electron delocalization.<sup>12</sup> The chemical shifts of  $H_1$  in **2i** and **2k** (relative to **2d**) also suggest a twisting of the 9-aryl ring, probably for steric reasons. Interestingly, the signals for  $H_2-H_7$  in **2i** ( $R' = 1$ -naphthyl) are shifted *downfield* from the corresponding signals in **2d** ( $R' = \text{phenyl}$ ) and **2h** ( $R' = 2$ -naphthyl), even though the calculated HOMO-LUMO energy gap in planar **2i** is smaller than those in the latter anions. This is best explained by a greater degree of twisting of the 1-naphthyl group compared to the phenyl and 2-naphthyl groups.<sup>13</sup>

**Acknowledgment.** We thank the National Science Foundation for support of this work and for a grant (GP 43155) used for the purchase of a 100-MHz NMR spectrometer.

## References and Notes

- (a) H. C. Lonquet-Higgins, *Chem. Soc., Spec. Publ.*, No. 21, 109 (1967); (b) J. A. Pople and K. G. Untch, *J. Am. Chem. Soc.*, **88**, 4811 (1966); (c) F. Baer, H. Kuhn, and W. Regel, *Z. Naturforsch. A*, **22**, 103 (1967); (d) L. Salem, "Molecular Orbital Theory of Conjugated Systems", W. A. Benjamin, New York, N.Y., 1966, pp 194-196; (e) T. Nakajima and S. Kohda, *Bull. Chem. Soc. Jpn.*, **39**, 804 (1966).
- Compounds **1g**, **1j** (prepared by Dr. Y. Ueno), and **1l** underwent reaction in lithium amide-ammonia but interpretable NMR spectra were not obtained.
- S. W. Staley and G. M. Cramer, *J. Am. Chem. Soc.*, **95**, 5051 (1973).
- S. W. Staley, G. E. Linkowski, and A. S. Heyn, *Tetrahedron*, **31**, 1131 (1975).
- H. H. Jaffe, *Chem. Rev.*, **53**, 191 (1953).
- All correlation coefficients were  $\geq 0.99$ .
- (a) L. M. Jackman and S. Sternhell, "Applications of Nuclear Magnetic Resonance Spectroscopy in Organic Chemistry", 2d ed, Pergamon Press, Oxford, 1969, p 66. (b) Approximately 100 correlations have been considered by T. Yokoyama, G. R. Wiley, and S. I. Miller, *J. Org. Chem.*, **34**, 1859 (1969).
- Inverse substituent effects on  $^{13}\text{C}$  chemical shifts have been reported: L. F. Blackwell, P. D. Buckley, and K. W. Jolley, *Tetrahedron Lett.*, 4271 (1975), and references cited therein.
- Note that these uv spectra represent the contributions of transitions in many different ion pairs. The low values of  $\epsilon$  are consistent with the expected charge-transfer nature of the HOMO-LUMO transitions.
- The hypsochromic shifts observed for **2b** and **2c** (relative to **2d**) contrast with the bathochromic shifts found for the band with charge transfer character in the corresponding para-substituted styrenes; J.-P. Durand, M. Davidson, M. Hellin, and F. Coussemant, *Bull. Soc. Chim. Fr.*, **43**, (1966).
- P. Zuman, "Substituent Effects in Organic Polarography", Plenum Press, New York, N.Y., 1967, Chapter III.
- A similar effect has been noted in the case of 6-arylfulvene derivatives: A. Pines and M. Rabinovitz, *J. Chem. Soc. B*, 385 (1971).
- Cf. P. Hrnčiar and M. Melicherčík, *Collect. Czech. Chem. Commun.*, **38**, 1200 (1973).

Stuart W. Staley,\* Gerard E. Linkowski

Department of Chemistry, University of Maryland  
College Park, Maryland 20742

Received March 8, 1976

## Nitrogen to Nitrogen Proton Transfer. The Significance of Large Negative Entropies of Activation

Sir:

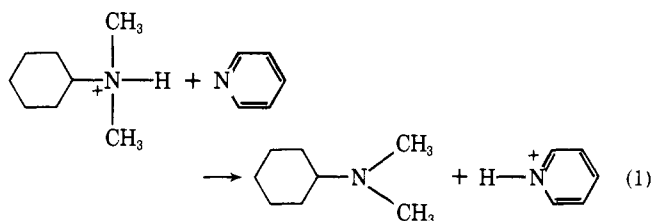
The activation entropies for transfer of a proton from  $\text{H}_3\text{O}^+$  to  $\text{H}_2\text{O}$  and from  $\text{H}_2\text{O}$  to  $^-\text{OH}$  are  $-5.8$  eu and  $-0.1$  eu, respectively.<sup>1</sup> These values are among the few available for fast proton transfers in protic solvents.<sup>2-4</sup> Corresponding data for

**Table I.** Rate Constants at 25° and Activation Parameters for Catalyzed Proton Transfer of *N,N*-Dimethylaminocyclohexylamine Hydrochloride in Chloroform

Catalyst	$\text{p}K_a^a$	$10^{-2}k_2$ , $\text{M}^{-1} \text{s}^{-1}$	$\Delta H^*$ , kcal/mol	$\Delta S^*$ , eu <sup>b</sup>
2,4-Lutidine	6.72	700	2.6	-28
4-Picoline	6.02	110	3.2	-29
Pyridine	5.21	13	3.9	-31
2,6-Di- <i>tert</i> -butylpyridine	4.91	8.7	3.4	-34
Aniline	4.63	4.3	3.9	-33
Dimethylaminoaceto- nitrile	4.20	1.7	5.2	-31
2-Methoxypyridine	3.28	0.11	5.5	-36
3-Bromopyridine	2.85	0.030	5.0	-40

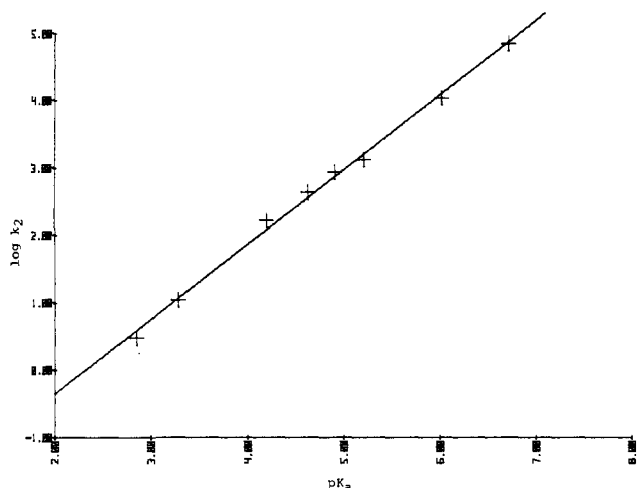
<sup>a</sup> In water. <sup>b</sup> Calculated from  $k_2$  values at 25° with an uncertainty of  $\pm 2.5$  eu.

the reactions in aprotic solvents are found even more infrequently.<sup>5,6</sup> We have measured  $\Delta S^*$  for proton transfer from an aliphatic amine salt to several substituted pyridines in chloroform (eq 1). By using an amine salt/amine system we



hoped to detect subtle orientation or solvation effects which are unobservable in reactions where charge production or destruction dominates  $\Delta S^*$ .<sup>7</sup> Unexpectedly, an effect was uncovered which can hardly be called subtle:  $\Delta S^*$  for eq 1 in chloroform equals  $-28$  to  $-40$  eu depending on the substituents on the pyridine ring (Table I). Such large negative entropies fall in the same range as those for bimolecular reactions which create charge (e.g.,  $\Delta S^* = -35$  eu for formation of *N*-methylpyridinium iodide from pyridine and methyl iodide in chloroform<sup>8</sup>). The present communication is devoted to explaining the magnitude of the  $\Delta S^*$  for eq 1.

Most of our runs were carried out with 0.10 M *N,N*-dimethylcyclohexylamine hydrochloride (**I**) using a tenfold concentration range of basic catalyst. Observed rate constants were deduced from the slow-passage NMR signal of the *N*-methyl protons<sup>9,10</sup> which changed from a doublet to a singlet as the catalyst concentration and temperature were raised. If the hydrochloride salt was not free from traces of unprotonated amine, the *N*-methyl signal gave a singlet even in the absence of added catalyst. Second-order rate constants, calculated from the slopes of linear plots of  $k_{\text{obsd}}$  vs. [catalyst], are listed in Table I. These  $k_2$ 's represent proton abstraction by the catalysts against a severe  $\text{p}K_a$  gradient and were used to obtain the activation entropies. Three different concentrations of **I** (0.31 M, 0.11 M, and 0.057 M) treated with the same amount of pyridine ( $4.9 \times 10^{-3}$  M) all yielded the same  $k_2$  ( $1360 \pm 120 \text{ M}^{-1} \text{ s}^{-1}$  at 25°). The poor solubility of **I** in many aprotic solvents prompted the choice of chloroform for this study. Chloroform was not the ideal solvent because it contained 0.8% ethanol as a preservative, and removal of the ethanol led to immediate solvent decomposition and erratic kinetics. However, ethanol did not appear to be a serious problem because 8.9% ethanol purposely added to the chloroform changed  $\Delta S^*$  only slightly (3 eu). Moreover, when 1% ethanol was added to a system containing highly purified methylene chloride as the solvent, the kinetics were not perturbed. Spectra were traced in the internal lock mode after temperature equilibration of the sample for 20 min in a Jeol-JNM-MH-100 spectrometer

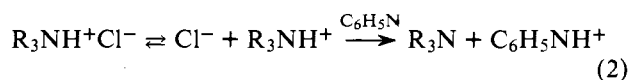


**Figure 1.** Brønsted plot of  $\log k_2$  vs.  $pK_a$  for the base-catalyzed proton exchange of *N,N*-dimethylcyclohexylamine hydrochloride in chloroform at 25°. Rate constants are in  $M^{-1} s^{-1}$  and  $pK_a$  values are taken from Table I.

set at an rf field of 0.1 mG, sweep width of 54 Hz, sweep time of 250 s, and filter band width of 20 Hz. An uncertainty of 2.5 eu in our  $\Delta S^*$  values reflects a 10–15% error in rate constants obtained over a 40–45° temperature interval.

The rate constants in Table I cover a range of  $2 \times 10^4$  and correlate closely with the basicity of the catalysts. A Brønsted plot, with a slope  $\beta = 1.1$  (Figure 1), points to a well-formed catalyst/proton bond in the transition state. Since this Brønsted plot utilizes aqueous  $pK_a$  values (not  $pK_a$ 's in chloroform), the value of  $\beta$  is meaningful only under the assumption that the  $pK_a$  shift from water to chloroform is constant for all pyridine bases. However, a  $\rho = -6.4$  for a Hammett plot based on 3- and 4-substituted pyridines (not shown) confirms that proton transfer in eq 1 is virtually complete in the transition state.<sup>6</sup> In the light of a nearly identical charge content of the ground state and transition state, how can the large negative  $\Delta S^*$  values be explained? One possibility is that the solvation requirements for protonated aliphatic amine and protonated pyridine differ substantially despite their identical charges. The validity of this rationale is demonstrated from the  $\Delta S^*$  values for the substituted pyridines (Table I) which gravitate from  $-28$  to  $-40$  eu as the basicity of the catalysts decreases. The poorer the base, the greater the solvation needs of the corresponding conjugate acid, and the more negative the  $\Delta S^*$ . We add parenthetically that the marked dependence of  $\Delta S^*$  on the nature of the positive charge demands great caution when using  $\Delta S^*$  as a criterion for the creation of charge.

Solvation differences between the reactant and product cations did not seem to be the sole explanation for the large negative entropies because  $\Delta S^*$  approximates  $-30$  eu even for the more basic catalysts. We therefore investigated whether or not the *anion* of I might also influence the proton transfer. The relative rate of pyridine-catalyzed proton exchange of I in chloroform increases from 1.0 to 7.6 to 52 as the counterion of I is changed from chloride to bromide to benzenesulfonate. Corresponding entropies are  $-31$ ,  $-23$ , and  $-20$  eu. These results can be best explained by an ion-pair dissociation (eq 2)<sup>11</sup> which precedes the rate-determining proton abstraction and which of course contributes to the observed  $\Delta S^*$ .



Since disengaging  $X^-$  from an ion-pair immobilizes solvent according to the charge density on  $X^-$ , the chloride salt would be expected to have the most negative  $\Delta S^*$ . Equation 2 is also

consistent with another observation, namely that  $\Delta S^*$  for the pyridine-catalyzed proton exchange of I (chloride salt) in pure ethanol is only  $-18$  eu. Dissociation of an anion from a "loose" ion-pair within a protic solvent demands less *additional* solvent stabilization of the anion. In summary, the exceptionally negative entropy of activation of eq 1 stems from several factors: the bimolecularity of the reaction; solvation differences between the donor and acceptor amines; freezing of solvent around the anion following ion-pair dissociation.

Interestingly, the severely hindered base 2,6-di-*tert*-butylpyridine displays normal reactivity (its  $k_2$  lies on the Brønsted line, not below it).<sup>12</sup> No doubt steric interactions between two bulky amines sharing a proton are reduced by the late transition state for eq 1. Freedom of  $k_2$  and  $\Delta S^*$  from steric effects also suggests that the two nitrogens and the proton in eq 1 prefer a rather inflexible linear orientation in the transition state.<sup>13,14</sup>

**Acknowledgment.** This work was supported in part by grants from the National Science Foundation (Grant No. CHE-7402279) and by the National Institutes of Health (Grant No. GM-20336 and GM-21457). We thank Professors Marjorie Caserio and Robert Taft for their valuable input.

## References and Notes

- (1) A. Loewenstein and A. Szoke, *J. Am. Chem. Soc.*, **84**, 1151 (1962).
- (2) T. M. Connor and A. Loewenstein, *J. Am. Chem. Soc.*, **83**, 560 (1961).
- (3) E. Grunwald and E. Price, *J. Am. Chem. Soc.*, **86**, 2970 (1964).
- (4) L. L. Schaleger and F. A. Long, *Adv. Phys. Org. Chem.*, **1**, 1 (1963).
- (5) D. M. Parbhoo, D. K. Chetty, and J. W. Bayles, *J. Chem. Soc., Perkin Trans. 2*, 1057 (1975), determined  $\Delta S^\circ$  for acid-base equilibria in aprotic solvents.
- (6) J. E. Crooks and B. H. Robinson, *Trans. Faraday Soc.*, **66**, 1436 (1970); *Faraday Symp. Chem. Soc.*, No. 10, 29 (1975).
- (7) J. L. Magee, T. Ri, and H. Eyring, *J. Chem. Phys.*, **9**, 419 (1941).
- (8) R. G. Pearson, *J. Chem. Phys.*, **20**, 1478 (1952).
- (9) F. M. Menger and G. Saito, *J. Am. Chem. Soc.*, **95**, 6838 (1973).
- (10) F. M. Menger and J. L. Lynn, *J. Am. Chem. Soc.*, **97**, 948 (1975).
- (11) For a discussion of the importance of ion-pairs in proton transfers in aprotic solvents see F. M. Menger, H. K. Rhee, and J. U. Rhee, *J. Am. Chem. Soc.*, **98**, 792 (1976).
- (12) F. Covitz and F. H. Westheimer, *J. Am. Chem. Soc.*, **85**, 1773 (1963).
- (13) R. D. Gandour, *Tetrahedron Lett.*, 295 (1974).
- (14) Any departure from linearity should accentuate interference between the amines. If the transition state for proton transfer were generally "floppy", then  $\Delta S^*$  for 2,6-di-*tert*-butylpyridine would have been unusually negative relative to the other amines. Transition state geometry remains the most important unknown in proton transfer chemistry.
- (15) Recipient of a Camille and Henry Dreyfus Foundation Teacher-Scholar Grant and a National Institutes of Health Research Career Development Award.

F. M. Menger,\*<sup>15</sup> T. D. Singh, F. L. Bayer

Department of Chemistry, Emory University  
Atlanta, Georgia 30322  
Received April 5, 1976

## Nybomycin. 8. Biosynthetic Origin of the Central Ring Carbons Studied by <sup>13</sup>C-Labeled Substrates<sup>1,2</sup>

Sir:

The antibiotic nybomycin (**1**) possesses two structural features of biosynthetic interest, a fused pyridoquinolone ring system and an angularly fused oxazoline ring. Both features have not been reported elsewhere in nature except for the naturally occurring deoxy nybomycin (**2**).<sup>3</sup> We recently established by use of <sup>14</sup>C- and <sup>13</sup>C-labeled precursors that the single-carbon units C-11' and C-2 (N-CH<sub>3</sub> and N-CH<sub>2</sub>-O, respectively) are derived from methionine, while the exterior carbons of the pyridone rings (C-4 to C-6, C-6', C-8 to C-10, C-8') arise from acetate.<sup>4</sup> The <sup>13</sup>C-labeled acetate feeding also showed that the central ring carbons are not derived from this source and, thus, eliminated the possibility of the aromatic system's arising from a phloroglucinol-type pathway.<sup>5</sup> We now present evidence which supports the intermediacy of a shiki-